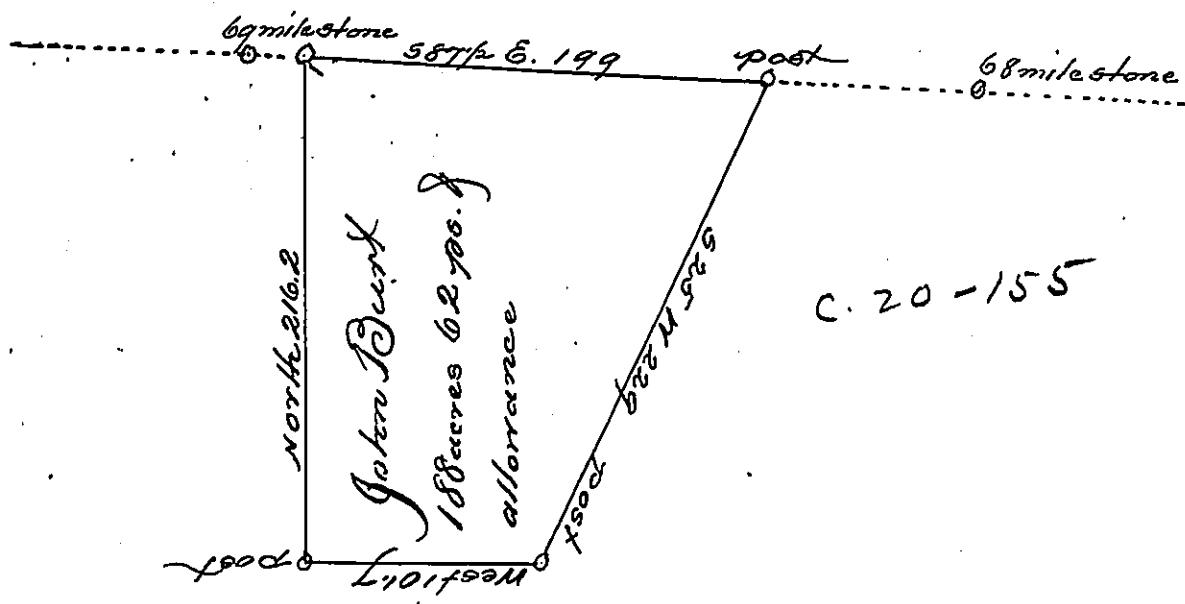


State line between New York and Pennsylvania



James
A. 73-70

A Draught of a tract of land situated in the township of Ridgbury
Bradford County, containing one hundred and eighty eight acres and
sixty two perches and allowance of six per per Cent for roads including
an improvement of John Burt and his family begun the first day of
April A.D. 1797, and continued containing a log house the residence of the
said Burt, a log barn and fifteen acres or more of improved land
Surveyed to the said Burt the 17th day of July 1820 by Jonathan
Stevens Esquire late Deputy Surveyor as appears from the
Books and papers of the said office and his draught in my posses-
ion. In pursuance of a warrant dated the first day of June A.D.
1820. Certified the 2nd day of July 1828.

Elipha Mason d. J.

To Gabriel Heister Esq.
Surveyor General

IN TESTIMONY that the above is a copy of the original remaining on file in
the Department of Internal Affairs of Pennsylvania, made
conformably to an Act of Assembly approved the 16th day of
February, 1833, I have hereunto set my Hand and caused
the Seal of said Department to be affixed at Harrisburg,
this second day of February, 1904.

Lucas P. Brown
Secretary of Internal Affairs.